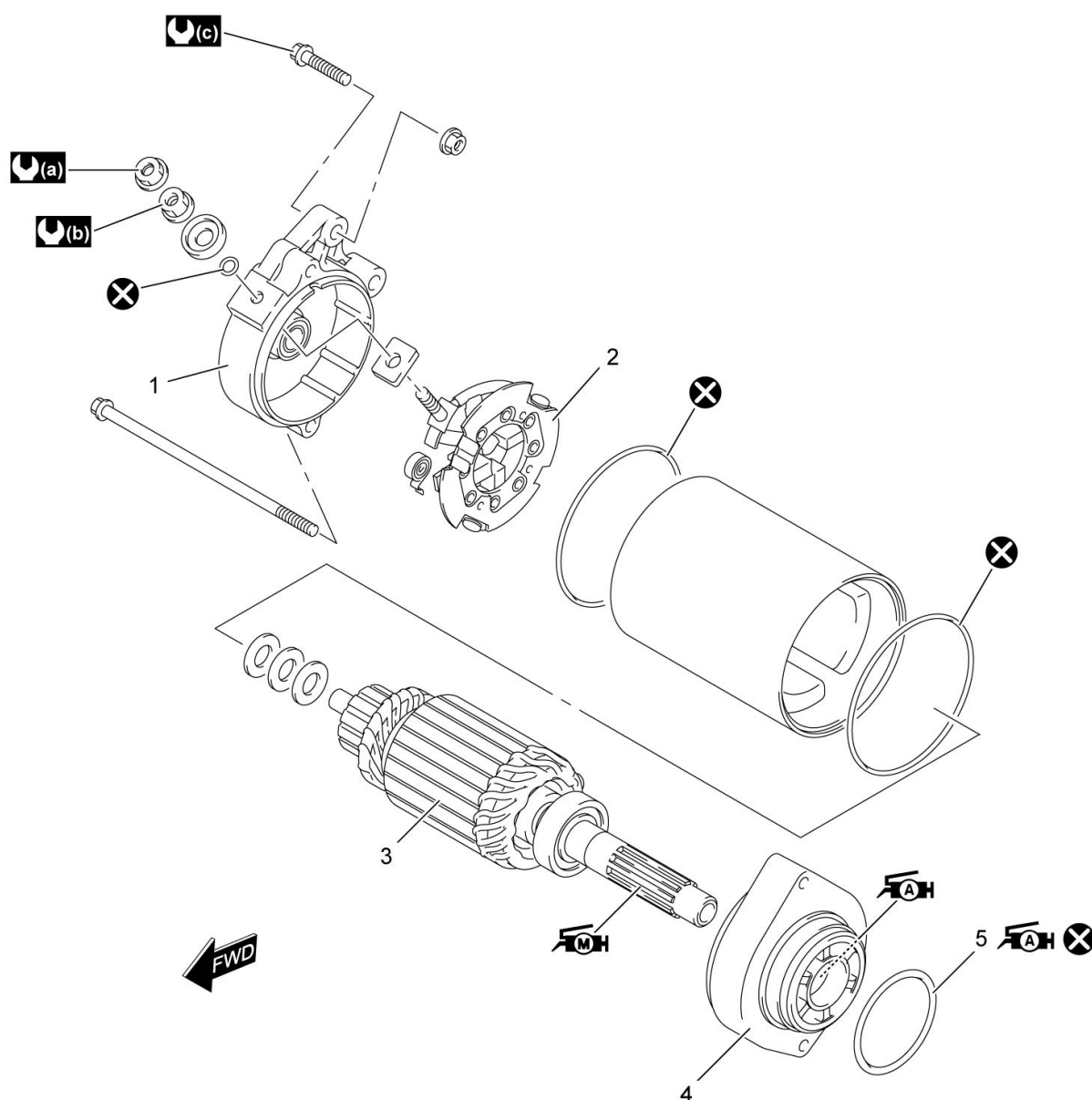


11



## Starter Motor Components



1.	Frame	4.	Housing	: 5 N·m (0.5 kgf-m, 4.0 lbf-ft)	: Apply moly past to sliding surface.
2.	Brush holder	5.	O-ring	: 10 N·m (1.0 kgf-m, 7.5 lbf-ft)	: Do not reuse.
3.	Armature	: 6 N·m (0.6 kgf-m, 4.5 lbf-ft)	: Apply grease.		